



CR

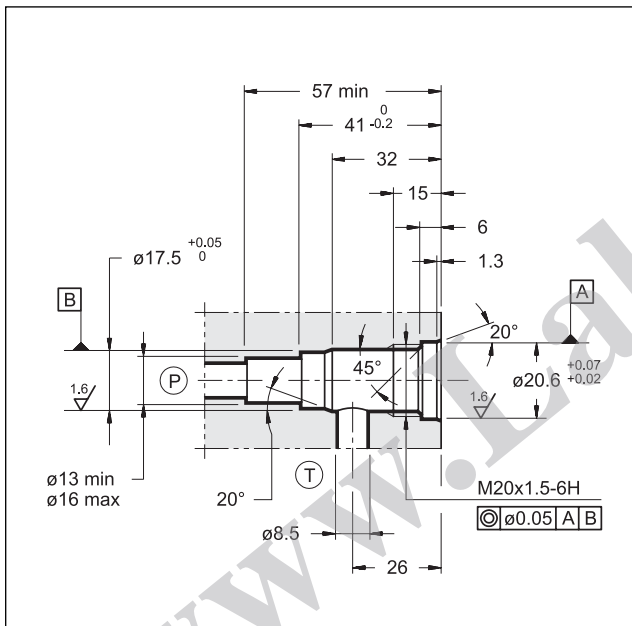
DIRECT OPERATED PRESSURE CONTROL VALVE SERIES 22

CARTRIDGE TYPE

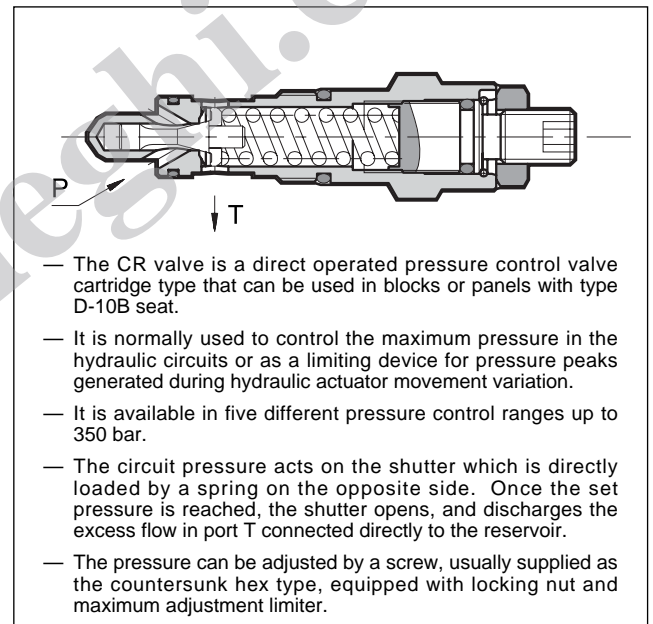
p max 350 bar

Q max 50 l/min

SEAT DIMENSIONS: D-10B



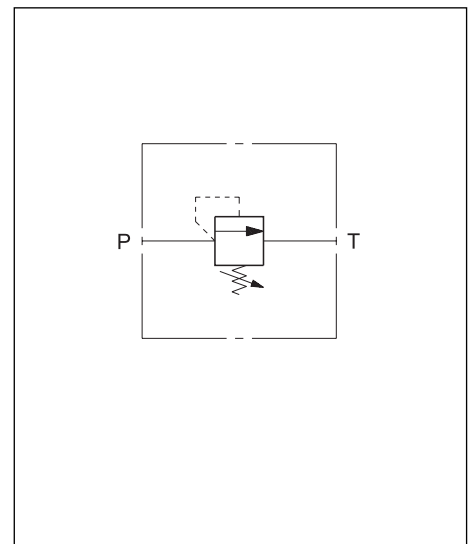
OPERATING PRINCIPLE



PERFORMANCE RATINGS (measured with mineral oil of viscosity 36 cSt at 50°C)

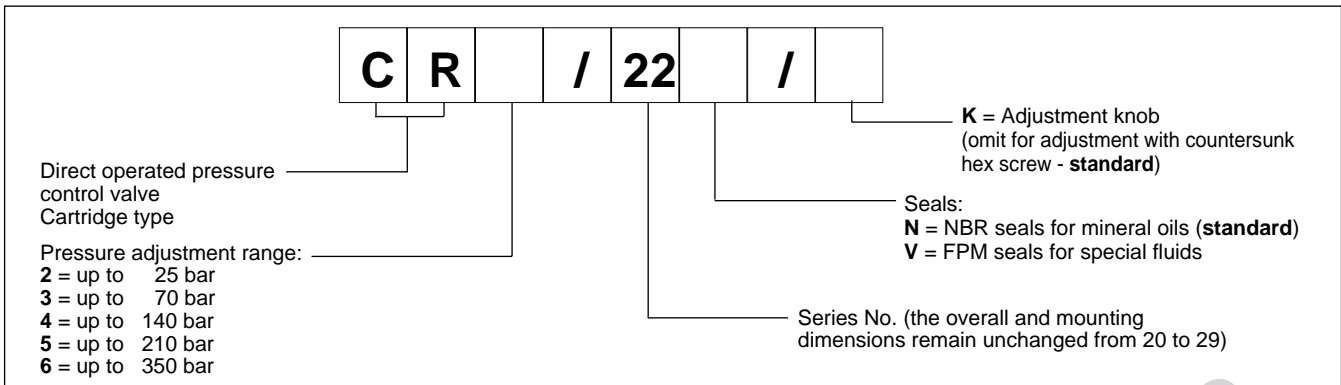
Max working pressure	bar	350
Minimum controlled pressure and pressure drop	see diagram	
Maximum flow rate	l/min	50
Ambient temperature range	°C	-20 ÷ +50
Fluid temperature range	°C	-20 ÷ +80
Fluid viscosity range	cSt	10 ÷ 400
Recommended viscosity	cSt	25
Fluid contamination degree	According to NAS 1638 class 10	
Mass	kg	0.16
Surface treatment with white colour zinc	Fe / Zn 8c 1B UNI ISO 2081/4520	

HYDRAULIC SYMBOL

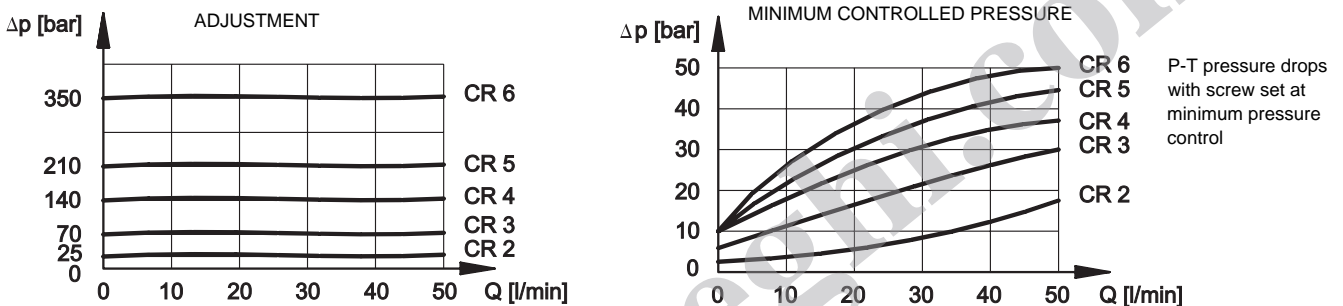




1 - IDENTIFICATION CODE



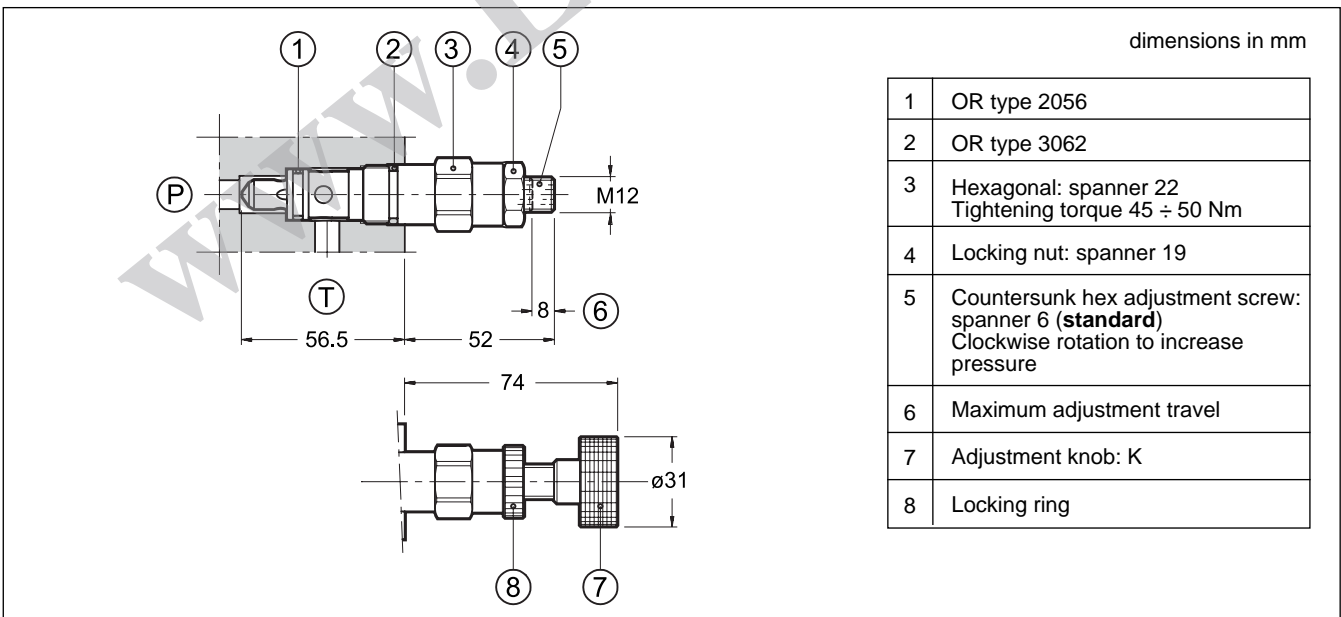
2 - CHARACTERISTIC CURVES (values obtained with viscosity of 36 cSt at 50°C)



3 - HYDRAULIC FLUIDS

Use mineral oil-based hydraulic fluids, with the addition of suitable anti-frothing and anti-oxidizing agents. For the use of other types (water glycol, phosphate esters and others), please consult our technical department.

4 - OVERALL AND MOUNTING DIMENSIONS



DIPLOMATIC OLEODINAMICA SpA
20025 LEGNANO (MI) - P.le Bozzi, 1 / Via Edison
Tel. 0331/472111-472236 - Fax 0331/548328